

CONTROL LEGEND

SD

SMOKE DETECTOR

TH

TEMPERATURE SENSOR

T

THERMOSTAT

RH

RELATIVE HUMIDITY SENSOR

PS

AIR PRESSURE SWITCH

AS

DISCHARGE AIR SENSOR

NOTE:  
SENSORS, WIRING, CONTROLS, ETC. WITH CONNECTIONS TO ECP/EMCC PANELS AS APPLICABLE. REFER TO CONTROL DRAWINGS M7.01, M7.02, M7.03 & M7.04

- GENERAL NOTES
1. EXHAUST DUCT FOR KITCHEN HOODS SHALL BE 16 GA. STEEL. ALL JOINTS AND SEAMS SHALL BE LIQUID TIGHT CONTINUOUS EXTERNALLY WELDED CONSTRUCTION.

2. COORDINATE DIFFUSER LOCATIONS WITH REFLECTED CEILING PLAN.

3. MOUNT KITCHEN HOODS 6'-8" A.F.F.

4. ALL DUCT DIMENSIONS ARE SHOWN "METAL TO METAL" DIMENSIONS. SUPPLY DUCT SHALL HAVE 2", 3/4 PCF, EXTERNALLY WRAPPED INSULATION WITH VAPOR BARRIER (SEE SPECIFICATIONS).

5. PROVIDE WALL COVER BETWEEN COOKING SURFACE AND KITCHEN HOOD. COVER SHALL BE SAME MATERIAL AS HOOD. SIZE: 48" HIGH x HOOD DIMENSION(S).

6. HOOD MANUFACTURER TO PROVIDE FIRE SUPPRESSION SYSTEM IN KITCHEN HOOD THAT WILL MEET LOCAL CODES (ANSUL R102 WET CHEMICAL).

7. GREASE EXHAUST DUCT SYSTEMS SERVING TYPE I HOODS SHALL HAVE A CLEARANCE TO COMBUSTIBLE CONSTRUCTION OF NOT LESS THAN 18 INCHES AND SHALL HAVE A CLEARANCE TO NONCOMBUSTIBLE CONSTRUCTION OF NOT LESS THAN 3 INCHES. WHERE CLEARANCE CANNOT BE PROVIDED, THE GREASE EXHAUST DUCT SYSTEM SHALL BE CONTINUOUSLY COVERED ON ALL SIDES WITH FIRE RATED DUCT WRAP FOR ZERO-CLEARANCE TO COMBUSTIBLES. EXTERNAL INSULATION FOR KITCHEN HOOD EXHAUST DUCT SHALL BE EQUAL TO TWO LAYERS OF 1/2" THICK, 6 pcf DENSITY DUCT WRAP EQUIVALENT TO 3M FIRE BARRIER DUCT WRAP 615+ (KITCHEN HOOD AND RACK OVEN EXHAUST).

8. MECHANICAL CONTRACTOR SHALL OBTAIN EQUIPMENT APPROVAL BY LOCAL FIRE AUTHORITY PRIOR TO EQUIPMENT MANUFACTURE.

9. MECHANICAL CONTRACTOR SHALL COORDINATE ALL WORK WITH OTHER TRADES TO AVOID CONFLICTS.

10. 120V CONTROL CIRCUIT AND POWER FOR KITCHEN HOOD SHALL BE SUPPLIED FROM ELECTRICAL PANEL IN DELI.

11. SEE SHEET M1.01 FOR RELATED MECHANICAL NOTES AND/OR SPECIFICATIONS.

12. REMOTE PULL STATION SHALL BE LOCATED AT OR NEAR A MEANS OF EGRESS FROM THE COOKING AREA, A MINIMUM OF 10 FEET AND A MAXIMUM 20 FEET FROM KITCHEN EXHAUST SYSTEM. REMOTE PULL STATION SHALL BE LOCATED 48" AFF. THE MANUAL ACTUATION SHALL REQUIRE A MAXIMUM 40 POUNDS FORCE AND A MAXIMUM 14 INCHES LENGTH OF PULL TO ACTUATE THE FIRE SUPPRESSION SYSTEM.

DELI/BAKERY FIRE SUPPRESSION HOOD PRE-TEST AND FINAL TEST

A PRE-TEST OF THE HOOD FIRE SUPPRESSION SYSTEM IS REQUIRED BY THE FOOD LION CONSTRUCTION DEPT. AND SHALL BE PERFORMED BY THE FIRE SUPPRESSION CONTRACTOR, G.C. AND HIS SUBS WILL BE REQUIRED TO BE ONSITE DURING TESTING. THE G.C. WILL BE REQUIRED TO CONTACT RICK THOMAS, SESCO, AT OFFICE: 704-243-3811 OR CELL: 704-906-5244, 3 BUSINESS DAYS IN ADVANCE OF THE FIRE MARSHAL TEST TO SCHEDULE PRETEST.

NOTE TO GC:  
HOOD PERFORMANCE TEST AND, IN SOME INSTANCES, AIR BALANCE OF HOOD EXHAUST FAN WILL BE REQUIRED. IT IS THE RESPONSIBILITY OF THE PERMIT HOLDER, MECH. CONTRACTOR, TO PROVIDE THIS SERVICE. THIS SERVICE MUST BE PRE-PLANNED SO THAT NO DELAYS WILL OCCUR TO DELI RE-OPENING.

ACTION TO BE TAKEN	RESPONSIBLE PARTY					REMARKS
	GC	EC	MC	FAC	THROUGH SESCO	
WIRE CT		X				SEE WIRING DIAGRAM #1; CT TO BE ORDERED FROM SESCO
WIRE SHUNT		X				SEE DIAGRAM ON CA MAIN SHEET; REFER TO HOOD WIRING #2
SET TIME DELAY LEVEL TO SETTING 10 (30 MINUTES)		X				
WIRE RTU EMERGENCY SHUTDOWN		X	X			SEE HOOD WIRING DIAGRAM #3
CONNECT FIRE ALARM CONTACTS AT MICRO SWITCH				X		
FIELD WIRE MICROSWITCH TO REMOTE CABINET (WHEN APPLICABLE)		X				APPLIES WHEN HOOD CONTROL CABINET IS REMOTE MOUNTED.
HOOD PRETEST	X	X	X		X	SCHEDULED BY GC; LISTED PARTIES MUST BE PRESENT
AIR BALANCE; HOOD PERFORMANCE TEST			X			CONTACT SESCO FOR LIST OF POSSIBLE CONTRACTORS
FAN CURB SEAL			X			SEE HOOD CURB DETAIL (SHEET M4.01)
SCHEDULE ANSUL TEST WITH FIRE MARSHALL	X					
WIRING OF EQUIPMENT UNDER HOOD PRIOR TO PRETEST	X	X				

NOTES:

1. THIS LIST IS INTENDED AS A GUIDE FOR DISCIPLINE RESPONSIBILITIES AND COORDINATION. IT IS NOT INTENDED TO IDENTIFY ALL ASPECTS OF THE HOOD INSTALLATION. REFER TO THE MECHANICAL PLANS AND SPECIFICATIONS FOR FURTHER INSTRUCTION.

2. REFER TO SPECIFICATIONS & DELI HOOD NOTES, SHEET M4.01, FOR PRETEST REQUIREMENTS AND INSTRUCTIONS.

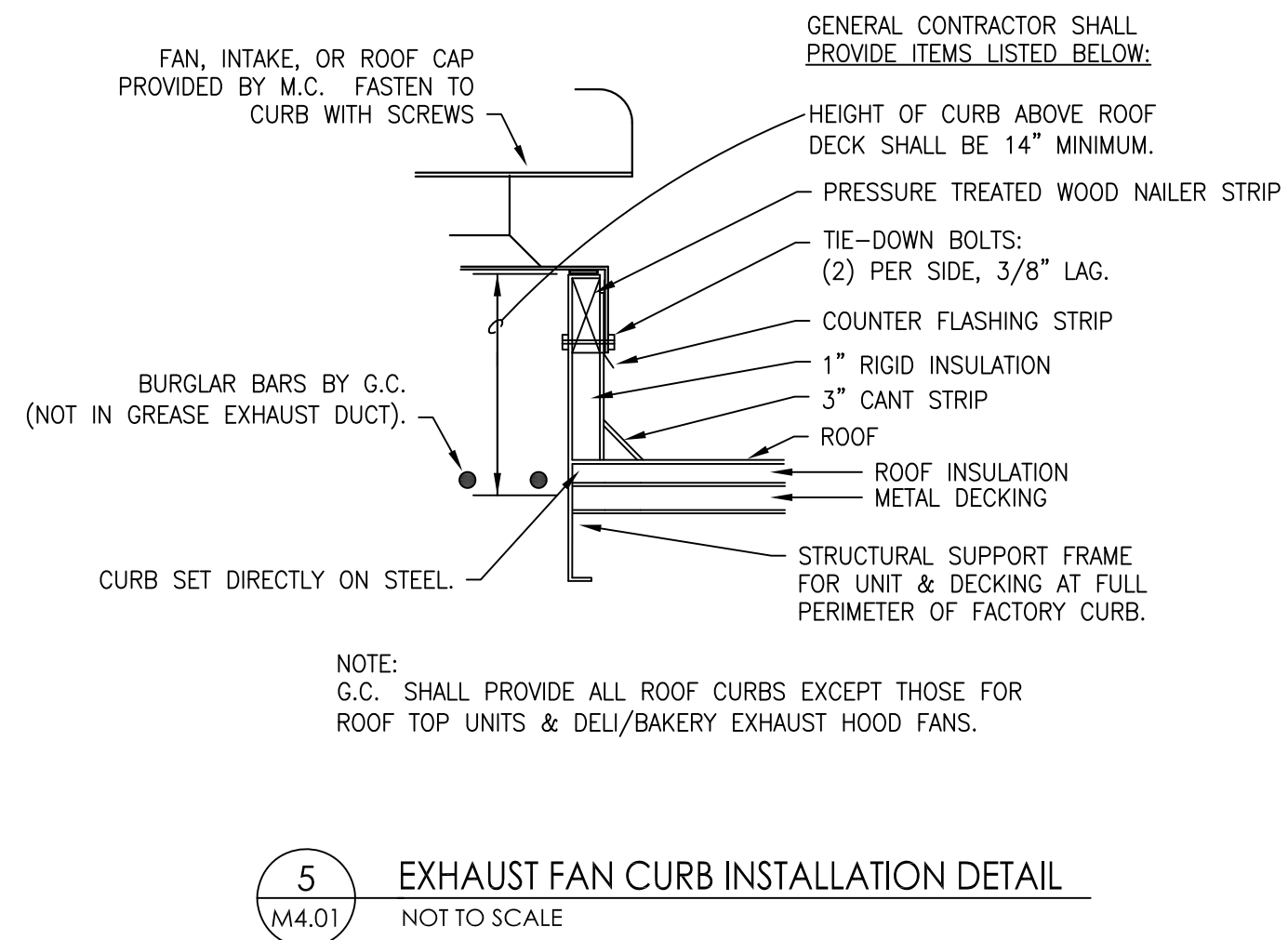
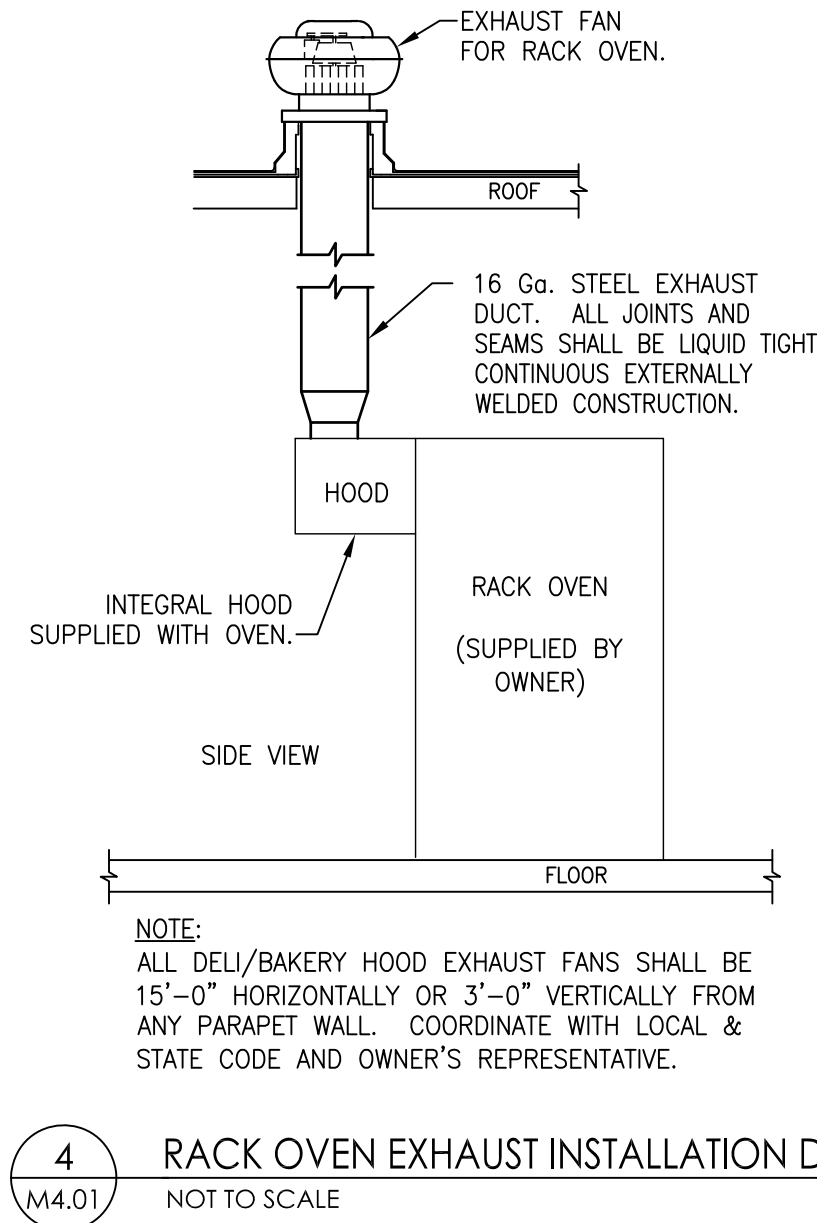
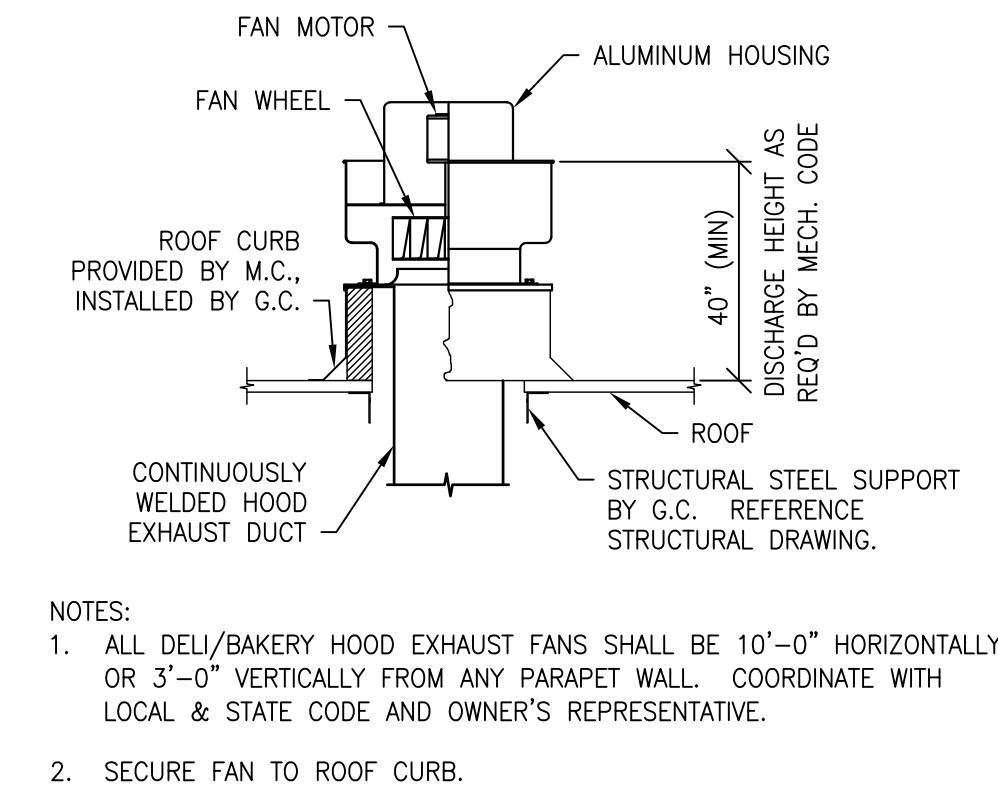
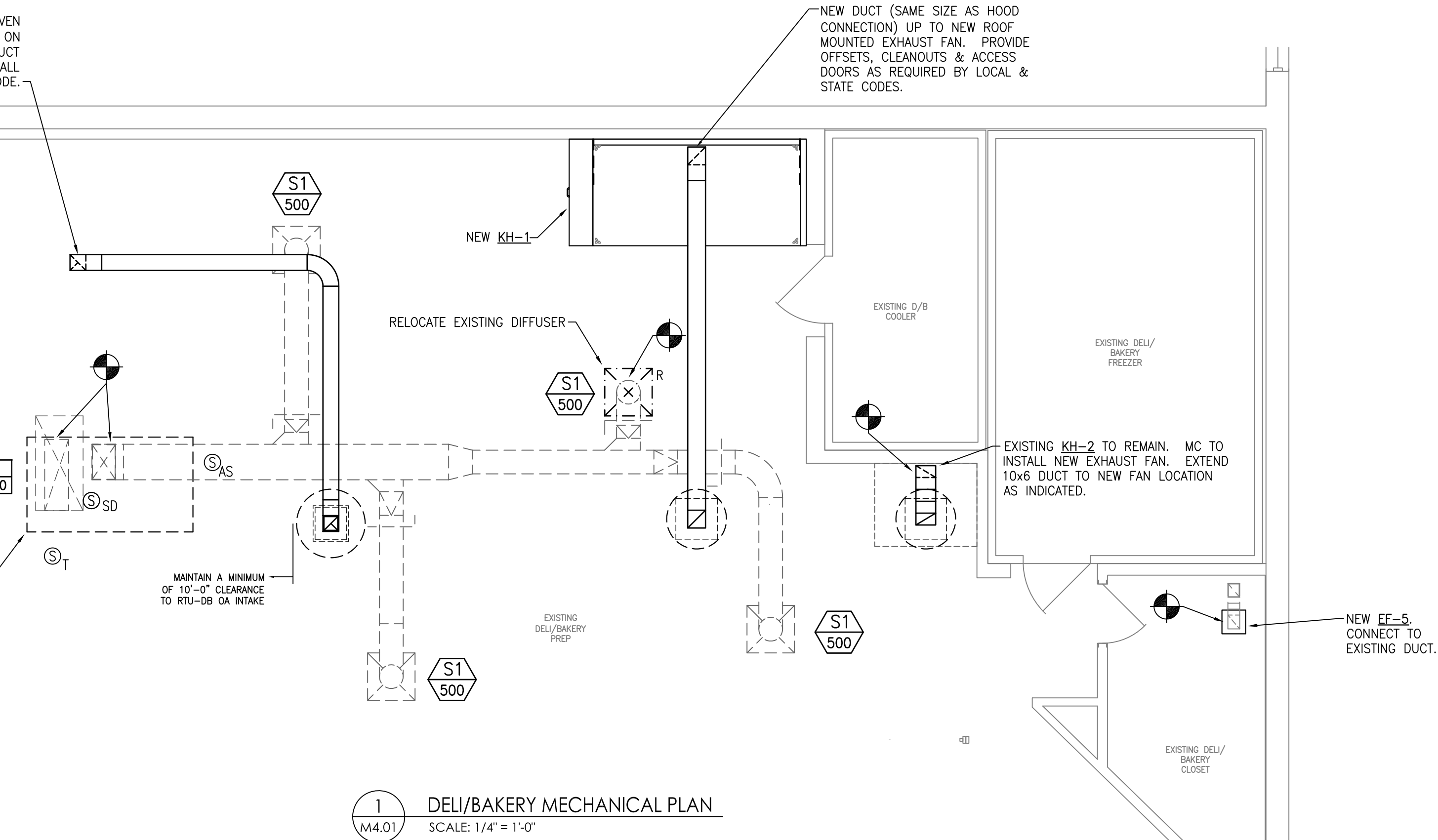
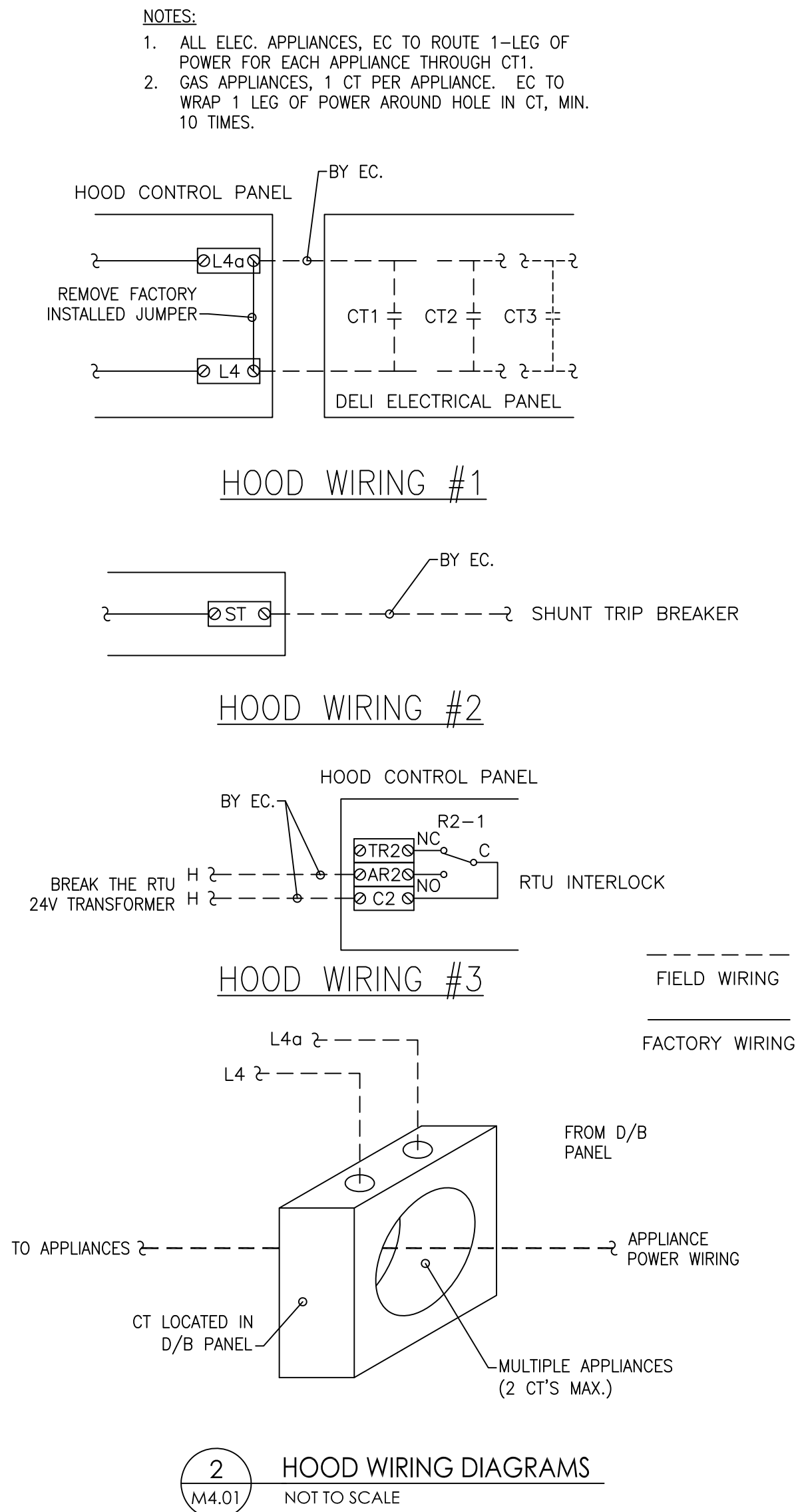
3. ELECTRICAL CONTRACTOR SHALL INSTALL AND WIRE CT'S FOR THE INTERLOCK OF THE COOKING EQUIPMENT UNDER THE KITCHEN HOOD WITH THE EXHAUST FAN. THE CONTROL WIRING FOR THE CT'S WILL BE TAKEN FROM THE HOOD CONTROL PANEL TERMINAL L4 & L4A, 2#14, AND WIRED IN PARALLEL. REFER TO HOOD WIRING #1. CONTACT SESCO PARTS FOR THE NUMBER OF CT'S REQUIRED. ONE CT CAN BE USED FOR MORE THAN ONE PIECE OF EQUIPMENT DEPENDING ON THE WIRE SIZE. CONTACT SESCO COMMISSIONING WITH ANY QUESTIONS.

4. GC/MC SHALL COORDINATE TESTS AND INSPECTIONS WITH RICK THOMAS, SESCO, 704-243-3811, AND SHALL SCHEDULE WITH CODE OFFICIALS.

5. SOME JURISDICTIONS MAY REQUIRE A SEALED AFFIDAVIT FROM A LICENSED PROFESSIONAL ENGINEER. ADDITIONALLY, THE JURISDICTION MAY REQUIRE A TEST & BALANCE REPORT SPECIFICALLY FOR THE HOOD. THIS MAY OCCUR PRIOR TO THE OVERALL BUILDING TEST & BALANCE. AS SUCH, THIS HOOD FAN TEST & BALANCE WILL NEED TO BE INDEPENDENTLY COORDINATED AND PAID FOR BY THE M.C. SESCO WILL STILL TEST & BALANCE THE HOOD AS PART OF THE OVERALL BUILDING TEST & BALANCE AT THE END OF THE PROJECT. THE M.C. IS RESPONSIBLE FOR ASCERTAINING IF THE JURISDICTION HAS THESE REQUIREMENTS.

6. DEMOLITION - MC SHALL DISABLE THE FIRE SUPPRESSION OF HOODS TO BE REMOVED BY UNSCREWING CO2 CARTRIDGE IN FIRE SUPPRESSION PANEL. CONTACT SESCO FOR ANY QUESTIONS.

7. IF THE ELECTRICAL CIRCUIT FOR HOOD IS RE-USED AS AN EXISTING CIRCUIT THE EC SHALL VERIFY WITH SESCO THAT THE CIRCUIT IS NOT BROKE ACROSS ENERGY MANAGEMENT LOAD 4. THIS INCLUDES POWER AND/OR CONTROL CIRCUIT.



YCH

YCH

ARCHITECTS

Yates-Chreitzberg-Hughes Architects, Corp.

Architecture  
Interior Design  
Land Planning  
Project Management

BOWERS CONSULTING, PA

1620 South MLK, Jr. Avenue - Suite 106  
Salisbury, NC 28144  
T: 704-630-0075 F: 704-630-0051  
DE COA: 4390

Professional Seals

Professional Engineer

RELAWARE

No. 21373

09/20/19

Interior Alteration For:

FOOD LION

2110 Executive Drive, Salisbury, NC 28145 / Ph: 704.635.8250

Store No. 1458

30214 Sussex Hwy  
Laurel, DE 19956

OWNERSHIP OF INSTRUMENTS OF SERVICE:

All reports, specifications, plans, computer files, field data, notes, and other documents and instruments of service shall remain the property of the Design Professional. The Design Professional shall retain all common law, statutory and other reserved rights, including the copyright thereto.

This drawing is the property of Yates - Chreitzberg - Hughes Architects and is not to be reproduced or copied in whole or any part. It is not to be used on any other project and is to be returned upon request.

© Copyright 2019

Project No.: 1458FLMK20

File Name: 1458 M4.01\_00.dwg

Date: 09-20-19

Revisions:

DELI/BAKERY RENOVATION PLAN

Mechanical

M4.01

YCH Commission Number 19018.00

7035 Northwinds Dr NW  
Concord, NC 28027  
704 . 788 . 2000  
ycharch.com